

SEPTEMBER 24
CCCA MEETING

Agenda

- 1) Officer Reports
 - 2) The Underground: JBGS
 - 3) The Airport Plans: MWAA.
 - 4) The Innovation Campus: VT
- ⦿ Next Annual Meeting: November 20th

President's Report

- Annual Meeting- 10 Years!
- Officers: Communications, Membership and Secretary.
- New Format of Newsletter!
- Upcoming events: Amazon Day, Long Bridge Drive & other projects.

Amazon's has lined up lawn games, interactive art installations, live screen printing, a community library, and even a live DJ to keep the energy up. Plus, there's plenty of activities for the kiddos, including a lego wall, face painting, bubble artists, and glitter tattoos. Embark on a culinary scavenger hunt to sample all the delicious flavors of Met Park, then lounge in our boozy brunch garden with a refreshing beer in hand.



The poster features the Amazon logo at the top center. Below it, the text "Community Day" is written in a large, dark blue, rounded font, with "AT MET" and "PARK" in a smaller, green, sans-serif font on either side. The date "September 21" is written in a bold, orange, sans-serif font. The time "9am - 1pm" is written in a white, sans-serif font on a green background. On the left, a yellow starburst contains the text "FUN FOR All Ages". On the right, two cartoon characters are walking: a light blue cloud character and a pink ice cream cone character with a cherry on top, wearing orange shoes and holding a pinwheel.

amazon

Community Day

AT MET PARK

September 21

9am - 1pm

FUN FOR All Ages

Long Bridge Drive Multimodal Connection

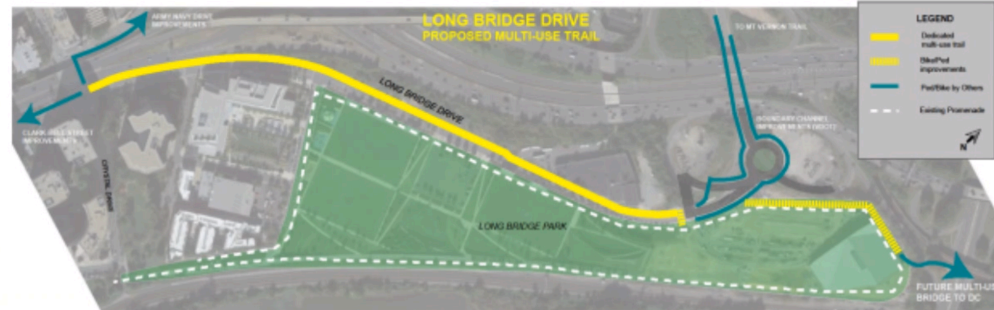
PROJECT PROGRESS UPDATE

KEY UPDATES

- Conceptual Design development ongoing
- Fall 2024 – Public Engagement on conceptual design scheduled for Thursday, September 26 at Long Bridge Aquatics Center.



More Information: visit arlingtonva.us and search "Long Bridge Drive Multimodal Connection"



Goals & Scope:

Create an enhanced ped/bike facility along Long Bridge Drive connecting the ped/bike terminus of the future Long Bridge Rail Project, as it lands behind the Long Bridge Aquatic Center, to the Crystal City bike network.

Basis:

Master Transportation Plan

Status:

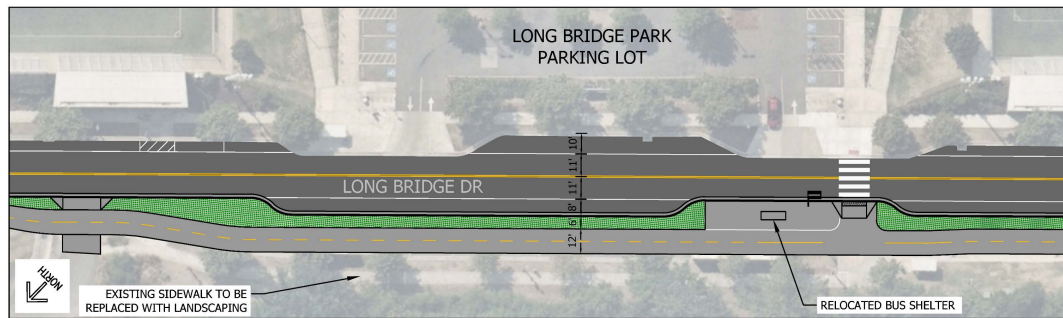
Conceptual design

Cost:

\$7.8M
Locally Funded
County Maintained

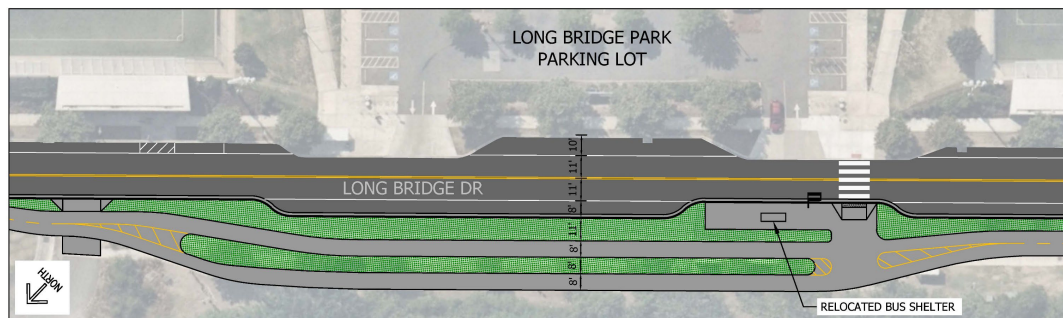
Long Bridge Drive Upgrade September 26, 5-7 at LBAC

Long Bridge Drive Multi-Use Trail Concepts: Together or Separate?



Trail Concept 1

- 12' wide two-way multi use trail replaces existing sidewalk
- Shorter crossing distances at bus stop thanks to bump-out
- Bus shelter relocated to be closer to crosswalk between park and trail

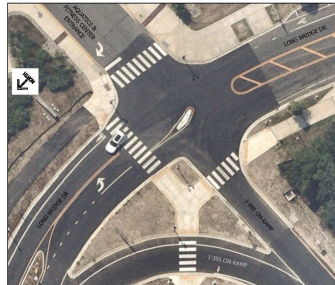


Trail Concept 2

- Two one-way 8' wide trails run parallel with an 8' median in between them, replacing the existing sidewalk
- Split trail increases space for new tree plantings between trail and road
- Creates additional planting space between trail and roadway

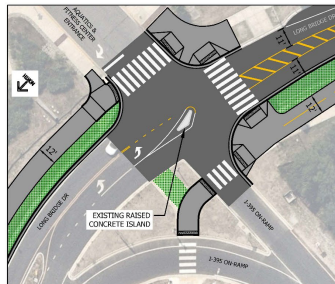
2nd Major Change

LONG BRIDGE DRIVE at LONG BRIDGE AQUATICS & FITNESS CENTER PARKING LOT



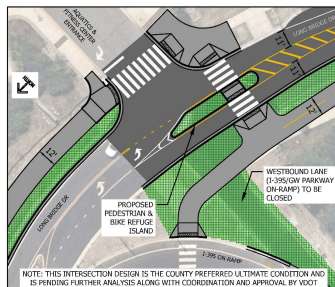
What's Here Today:

- Existing sidewalk connection to Boundary Channel Drive / Mt. Vernon Trail
- Crosswalk conflicts with vehicles turning left into the parking lot



Intersection Concept 1

- Relocate crosswalk across Long Bridge Dr to remove conflict with turn lane
- Curb extensions to reduce crosswalk distances and slow turning vehicles
- Wider curb ramps for trail users



Intersection Concept 2

- Relocate crosswalk across Long Bridge Dr to remove conflict with turn lane
- Eliminate north-bound left turn from Long Bridge Drive on to I-395 on-ramp
- Create refuge for trail crossing at Long Bridge Drive, narrowing lanes to slow vehicle speeds

NOTE: THIS INTERSECTION DESIGN IS THE COUNTY PREFERRED ULTIMATE CONDITION AND IS PENDING FURTHER ANALYSIS ALONG WITH COORDINATION AND APPROVAL BY VDOT

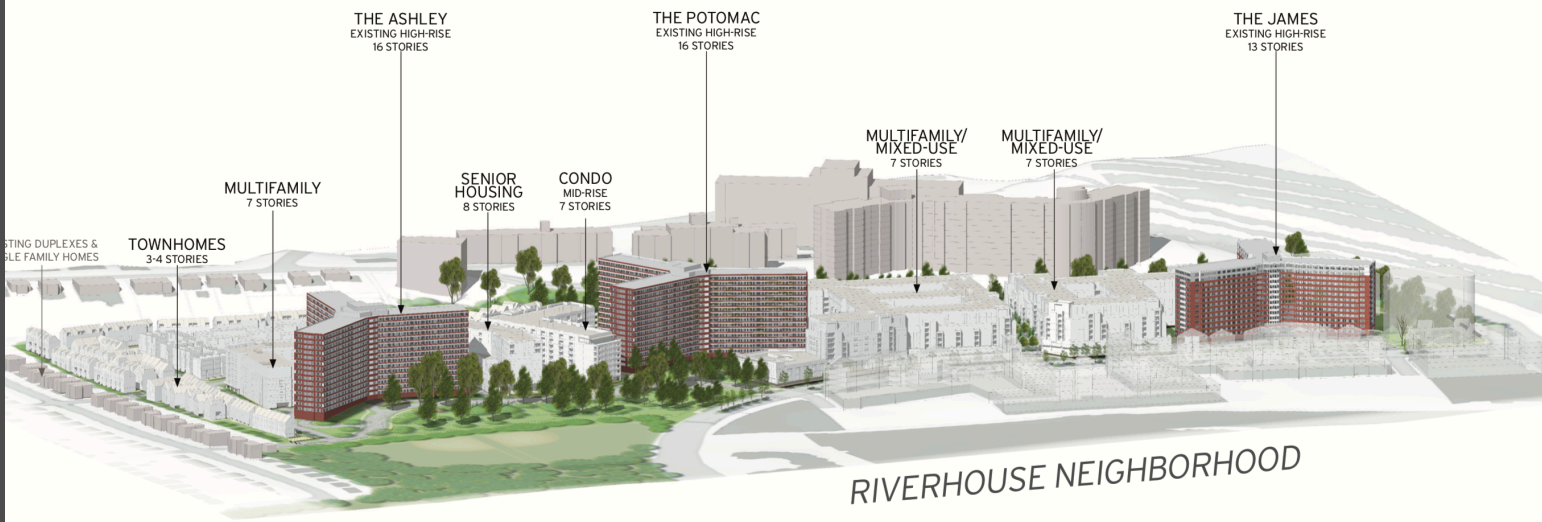
Event Details

- ⦿ Thursday, September 26
- ⦿ 5:00 P.M. – 7:30 P.M.
- ⦿ Long Bridge Aquatics & Fitness Center, Community Room #2

- ⦿ Can't make it? You can also share your feedback on the initial concept design online using the online feedback form through Sunday, September 29, 2024.

Riverhouse Plan

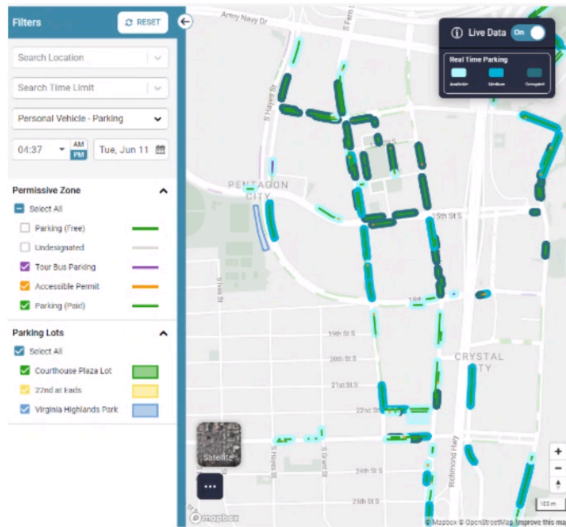
PROPOSED DESIGN RIVERHOUSE NEIGHBORHOOD



- Online Engagement from September 9 – 22. The Online Engagement will include video presentations from both the applicant and staff, as well as a survey questionnaire covering a broad range of topics such as land use, site and building form, architecture, public spaces/biophilia, transportation, and community benefits.



Performance Parking Pilot



UPDATES:

- February 24 County Board adopted temporary ordinance enabling administrative price changes
- March 18 first quarterly price change went into effect in Rosslyn-Ballston Corridor, impacting ~12% of project area spaces
- Space availability and price visible in multiple apps/mobile websites
- End May/Beginning June, sensor installs filled gaps in Rt. 1 corridor
- Second quarterly price change occurred June 24, which included parts of Rt. 1 corridor
- \$0.50 price increase at approximately 22% of metered parking spaces in the project area, and a \$0.25 price decrease at approximately 15% of spaces

COUNTY PROJECT UPDATE

Want to Find Parking?

Parking spaces in the Metro corridors are now equipped with **sensors!**

There are **new tools** to help you **plan ahead and find parking.**

Learn more by scanning the code, or visit www.arlingtonva.us and search "Performance Parking"



Goals & Scope:

Determining if varying meter rates and hours to manage parking demand is right for Arlington's high-demand commercial and multifamily corridors. Test out utility of real-time availability and price information for parker trip planning and improved business/community access.

Basis:

MTP – Parking Element

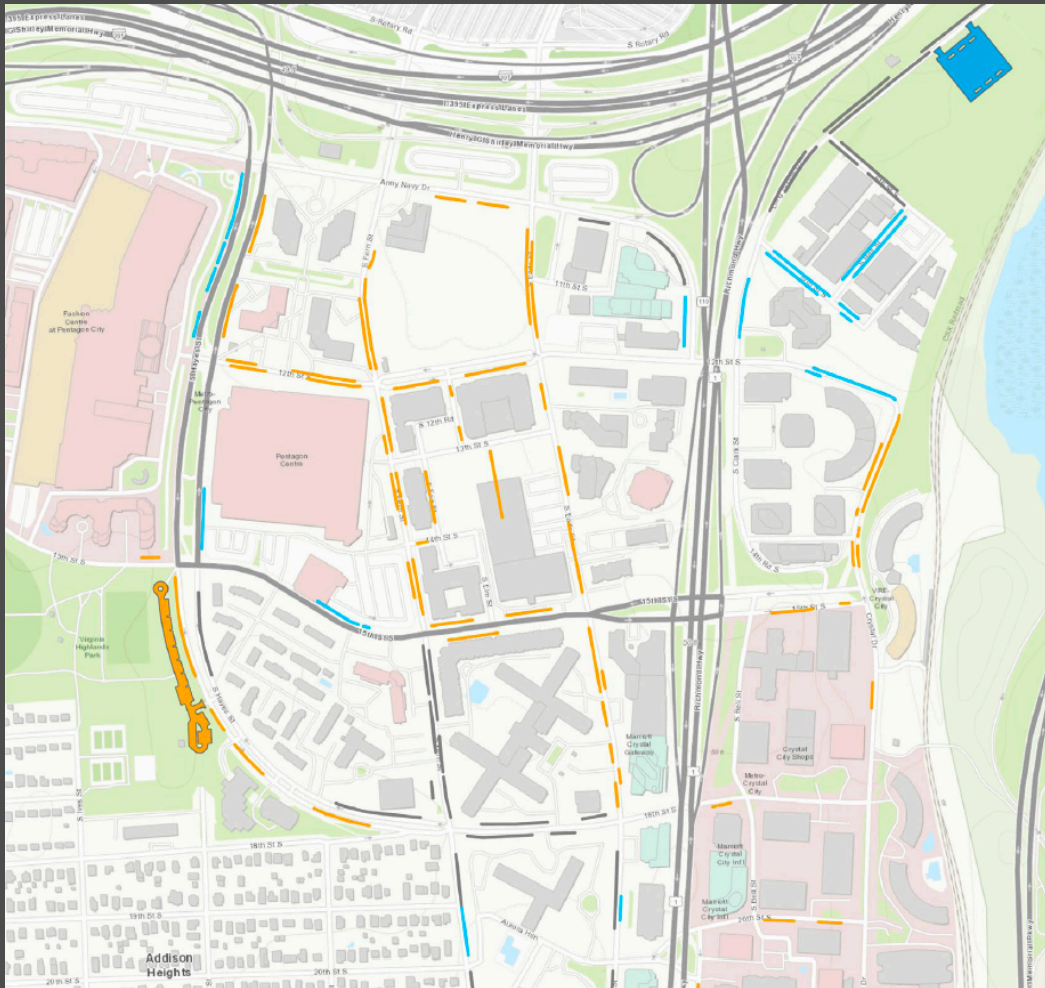
Status:

System operations; public data tools available; second price change coming up soon

Cost:

Up to \$5.4M
State Funding,
County implemented

On-Street Parking Prices Change



Crystal City to DCA Multimodal Connection (CC2DCA)

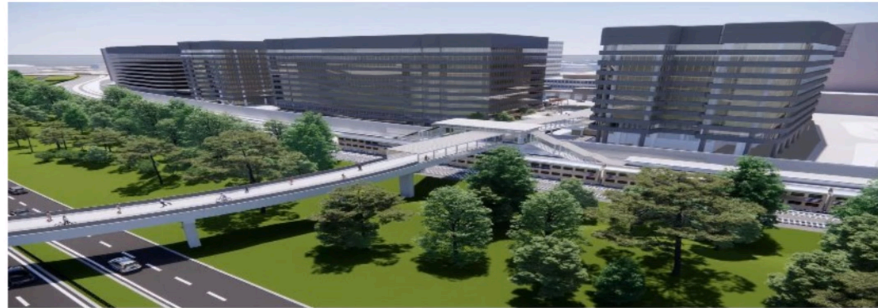
PROJECT PROGRESS UPDATE



More Information: visit arlingtonva.us and search "CC2DCA"

KEY UPDATES

- NEPA process completed June 2024
- Preliminary Engineering and Design ongoing with 15% Design submittal anticipated in late 2024
- Coordination with project stakeholders (MWA, VRE, CSX, etc.) ongoing.
- Public Engagement anticipated late 2024/early 2025.



* Rendering of preferred alternative spanning rail corridor. Located near 2011 Crystal Drive

Goals & Scope:

Construct a multimodal connection between Crystal City and DCA

Basis:

Crystal City Sector Plan

Status:

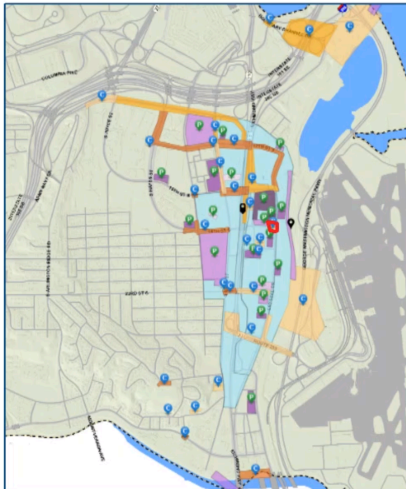
NEPA Phase Completed
Preliminary Engineering ongoing.

Cost:

\$57M +
Local, State, Federal
funding
County maintained

Crystal City Metro Station East Entrance

PROJECT PROGRESS UPDATE



More Information: visit arlingtonva.us and search "Crystal City Entrance"

KEY UPDATES

- Final Design approaching 100% (complete Feb. 2025)
- MOT and construction fencing established; grubbing, grading, and utility relocation completed; excavation and sheeting and shoring to begin Fall 2024
- Groundbreaking Ceremony held July 12, 2024
- Station entrance opening in 2027
- Close coordination with WMATA throughout Design and Construction to meet requirements and minimize impacts

Rendering of Entrance Pavilion



Construction Site - Sept. 3, 2024



Groundbreaking Ceremony July 12, 2024



Goals & Scope:

Construct a second entrance to the Crystal City Metrorail station to better facilitate multimodal connections

Basis:

Crystal City Sector Plan, Crystal City Station Access and Second Entrance Feasibility Studies

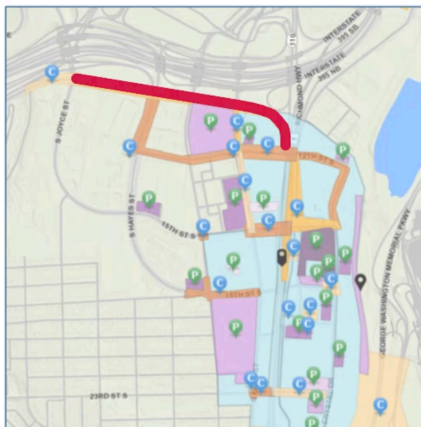
Status:

Final Design (Aug 2023 – Feb 2025)
Construction Aug 2024 – Mar 2027

Cost:

\$146.1M
Local, State, Federal funding
WMATA maintained

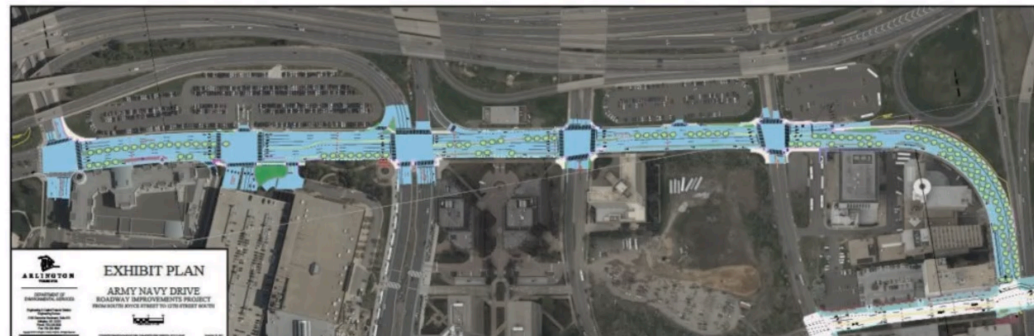
Army Navy Drive Complete Street



More Information: visit arlingtonva.us and search "Army Navy Drive Complete"

KEY UPDATES

- Phase 1 (median demolition, temp paving, markings) **COMPLETED**
- Phase 2A (new sidewalks, curbs, stormwater, signals) **IN PROGRESS**
- Phase 2B (new separated, buffered 2-way bike track) **IN PROGRESS**



Goals & Scope:

- Re-build Army Navy Drive as a **Complete Street**.
- Improve safe, multimodal connections to and through Pentagon City & Crystal City.
- Integrate with the Transitway Extension to Pentagon City.

Basis:

- MTP Bike Element
- Crystal City Sector Plan & Multimodal Study

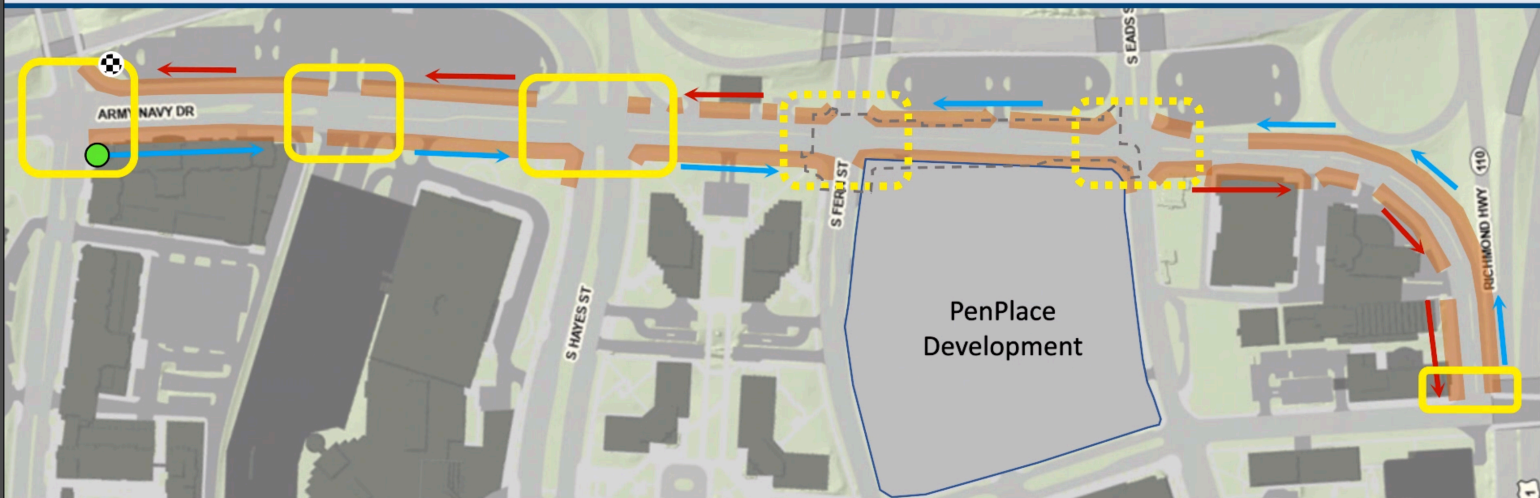
Status:

- In coordination with PenPlace and adjacent County projects
- Construction on track to wrap late fall 2025.

Cost:

- \$14M CIP construction budget
- Federal/regional funding
- County maintained

Army Navy Drive Complete Street



Construction Phase 2A:







- Update of MOT measures: messaging boards, signage, barrels, lane shifts, etc.
- Removal of existing storm structures
- Demolition of existing curbs and sidewalks
- Conduit work for new streetlight & signal improvements
- Installation of new curbs and sidewalks

Status:



Estimated Milestones

- Joyce-Fern (South side): **Summer 2024** 
- Eads-12th St. (South side): **Late Fall 2024** 
- 12th St.-Fern (North side): **Spring 2025** 
- Fern-Joyce (North side): **Spring 2025** 

President's Report

- Annual Meeting- 10 Years!
- Officers: Communications, Membership and Secretary.
- New Format of Newsletter!
- Boundary Channel Interchange & other projects.

Agenda

- 1) Officer Reports
 - 2) The Underground: JBGS
 - 3) The Airport Plans: MWAA.
 - 4) The Innovation Campus: VT
- ⦿ Next Annual Meeting: November 20th