



# **DCA's Capital Projects MWAA Update 2024 Prepared for Crystal City Civic Association**

**Michael J. Cooper**  
**Metropolitan Washington Airports Authority**  
State & Local Government Affairs Manager

September 18, 2024

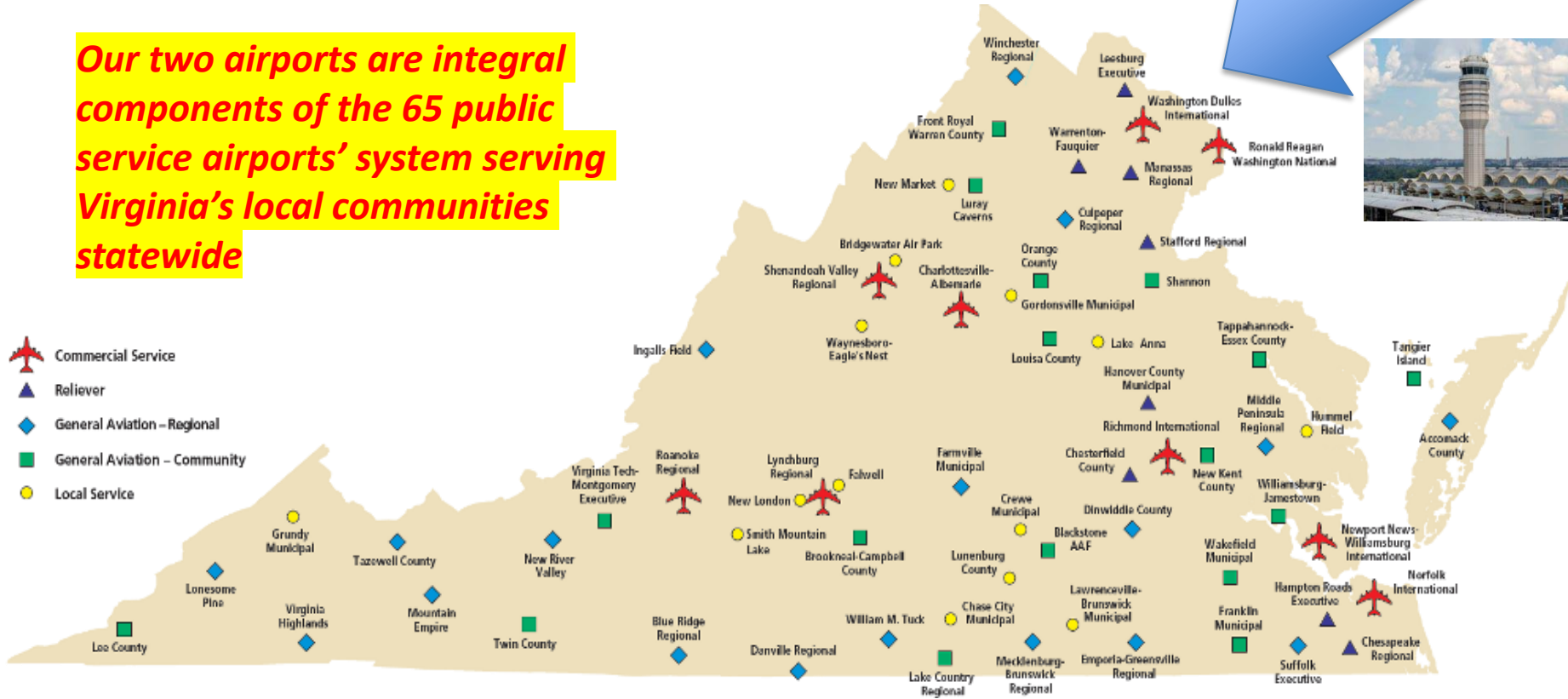
# MWAA's Mission: Serving the Traveling Public, Promoting Economic Growth





# Working Together & Within Virginia's Aviation System: Washington Dulles International Airport Ronald Reagan National Airport

***Our two airports are integral components of the 65 public service airports' system serving Virginia's local communities statewide***





# MWAA Federal Lease Is Extended Through 2100

**LEASE**  
**of the**  
**METROPOLITAN WASHINGTON AIRPORTS**  
**between**  
**THE UNITED STATES OF AMERICA**  
**acting by and through**  
**THE SECRETARY OF TRANSPORTATION**



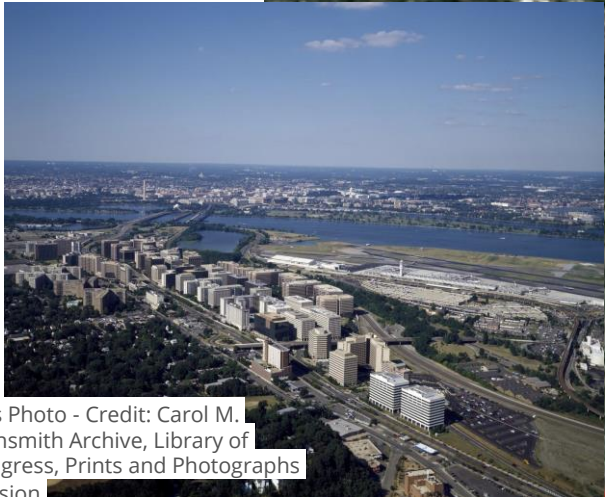
- Signed by U.S. Transportation Secretary Buttigieg, Commonwealth of Virginia Governor Youngkin, District of Columbia Mayor Bowser
- Covers federally owned land and facilities at the airports and land within the Dulles Access Highway right-of-way – a total of almost 12,000 acres
- Enables financing of major construction projects through the bond market
- Provides time for long-term leases and sub-leases of airport land needed to support airport operations and expand non-airline revenue

MWAA Lease Article 11.B “The Airports Authority shall operate, maintain, protect, promote and **develop the Metropolitan Washington Airports as a unit** and as primary airports serving the Metropolitan Washington Area.”



METROPOLITAN WASHINGTON AIRPORTS AUTHORITY

# MWAA-DCA Crystal City & Regional Building Heights, Obstacle & Roadway Evaluations Regularly Occur



This Photo - Credit: Carol M. Highsmith Archive, Library of Congress, Prints and Photographs Division.





# IMPROVEMENTS AT REAGAN NATIONAL





## MWAA-DCA ABINGDON PLANTATION SIGNAGE TELLS BROADER STORY

- For years, historical signage at the ruins of Abingdon Plantation at DCA told only part of the plantation's story - that of Abingdon's owners
- After researching the history further, the Airports Authority has added three new signs at the ruins that include the story of the enslaved population and add context to the exhibit
- Those signs were unveiled during a June 17 ribbon-cutting ceremony
- A colonial plantation, Abingdon was the birthplace of Martha Washington's granddaughter, Eleanor Parke Custis. The plantation's ruins are a short walk from the Terminal 2 parking garage

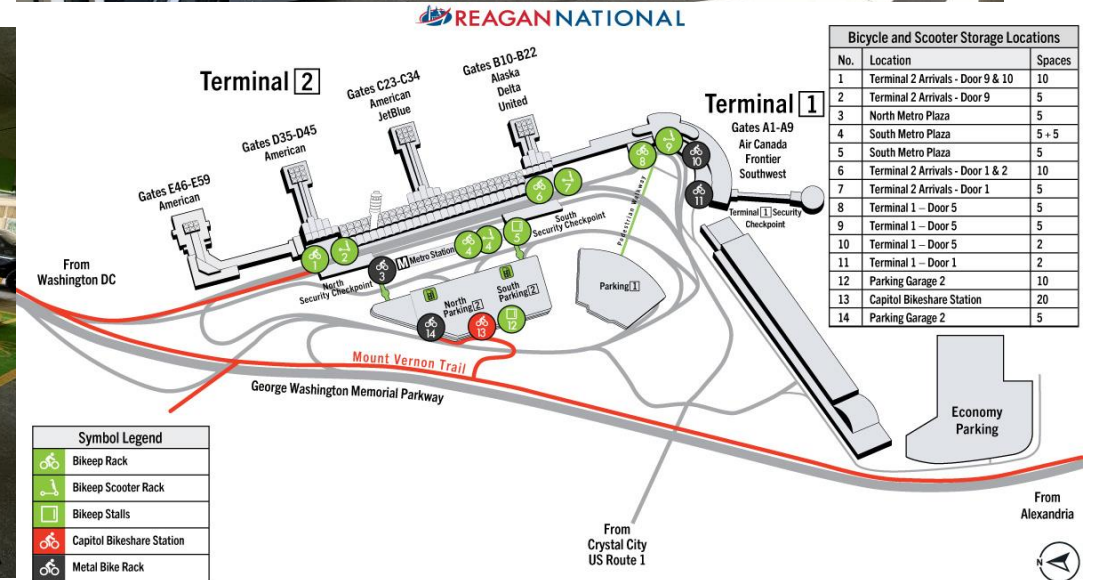




# Bikeep Now Augments Capital Bikeshare at DCA

(The “Friends of Mount Vernon Trail” Have Posted a DCA Bike Route Video: <https://www.youtube.com/watch?v=3PK8duW7USw>)

In addition to our Capital Bikeshare availability, 30 new “Bikeep” racks and 15 bike storage stalls are now located under cover between DCA’s Terminals 1 and 2. Bikeep racks include electric charging capabilities for E-bike and scooters.







# Additional Ronald Reagan National Airport Facilities Improvements Continue

- New concourse with new passenger amenities
- New and upgraded concessions
- New security checkpoints
- New restrooms, passenger lounges, seating areas
- New surfaces on runways



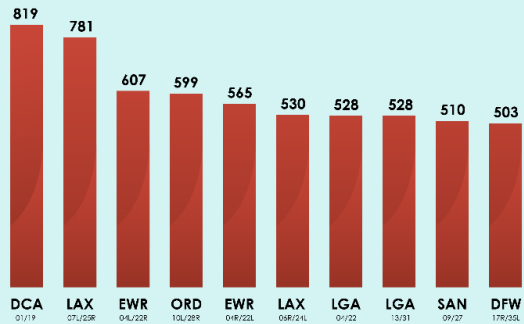


# DCA RUNWAYS 1-19 AND 15-33 PAVEMENT REHABILITATION

## Project Overview

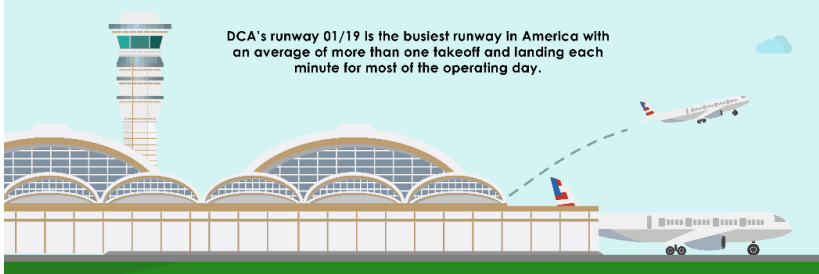
### AMERICA'S BUSIEST RUNWAY

Average Number of Daily Scheduled Commercial Operations



America's 10 Busiest Commercial Runways (March-2023)

DCA's runway 01/19 is the busiest runway in America with an average of more than one takeoff and landing each minute for most of the operating day.



Source: Published Airline Schedules for March 15, 2023 via Cirium; Data as of May 23, 2023 & historical public runway utilization data published by each airport



Temporary Asphalt Batch Plant Site





# New Use and Lease Agreement with Airlines

## 15-year pact, includes new \$9 billion capital construction program

- Continued ability to recover major costs associated with operating airports.
- A \$6.99 billion capital construction program for Washington Dulles, including 14-gate concourse, design work for fifth runway, future projects to accommodate growth.
- A \$2.39 billion capital construction program for Reagan National, including new restrooms and other amenities, eventual replacement of Terminal 1 concourse.
- Airline-funded debt service coverage to ensure at least 140 percent target ratio.



# Use & Lease Agreement Program Summary

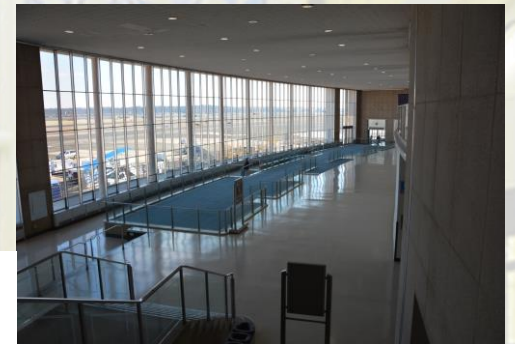
(2025 dollars)

<b>Project Categories</b>	<b>IAD (Cost in Millions)</b>	<b>DCA (Cost in Millions)</b>	<b>Total Est. Cost (Cost in Millions)</b>
Buildings	\$4,830	\$1,295	\$6,125
Roads	\$499	\$360	\$859
Parking Facilities	\$150	\$100	\$250
Airfield Facilities	\$795	\$256	\$1,051
IT Software & Systems	\$25	\$25	\$50
Utility Systems	\$239	\$190	\$429
Other Projects	\$461	\$160	\$621
<b>TOTAL 2025 U&amp;L</b>	<b>\$6,999</b>	<b>\$2,386</b>	<b>\$9,385</b>



# DCA Improvements Project Goals

- ✈️ **Optimally Plan For Development Of The Terminal A Site Including The 1941 Terminal And Adjoining Apron**
  - Replace The Nine Gate Banjo With Same Number Of Gates But Flexible Enough To Accommodate Future Needs
- ✈️ **Deliver A Modern Passenger Convenience While Respecting The Terminal's Historic Context**
  - Provide A Frictionless Passenger Travel Experience
  - Accommodate Changing Passenger Preferences By Improving Passenger Choices For Engagement And Services
- ✈️ **Progress towards MWAA's 2020 Sustainability Plan Overarching Goals**
  - Increase efficiency of the Airport's built environment
  - LEED and/or Envision Silver Certifiable
  - energy use intensity; water use efficiency
  - fossil fuel use reduction through electrification
  - embodied and operational carbon





# Reagan National Airport Facilities

## Terminal 1 (~\$835M)

1	Enabling – Relocation of Key Functions
2	Enabling – Utility Relocation
3	Terminal 1 Redevelopment





# Option 8

KUNALU KEAGAN WASHINGTON NATIONAL AIRPORT

JUNE 2022

DRAFT



- 1 Terminal Improvement
- 2 Roadway Improvement
- 3 TNC / Taxi Garage Improvement

SOURCE: Ricordo & Associates, Inc., 2022.

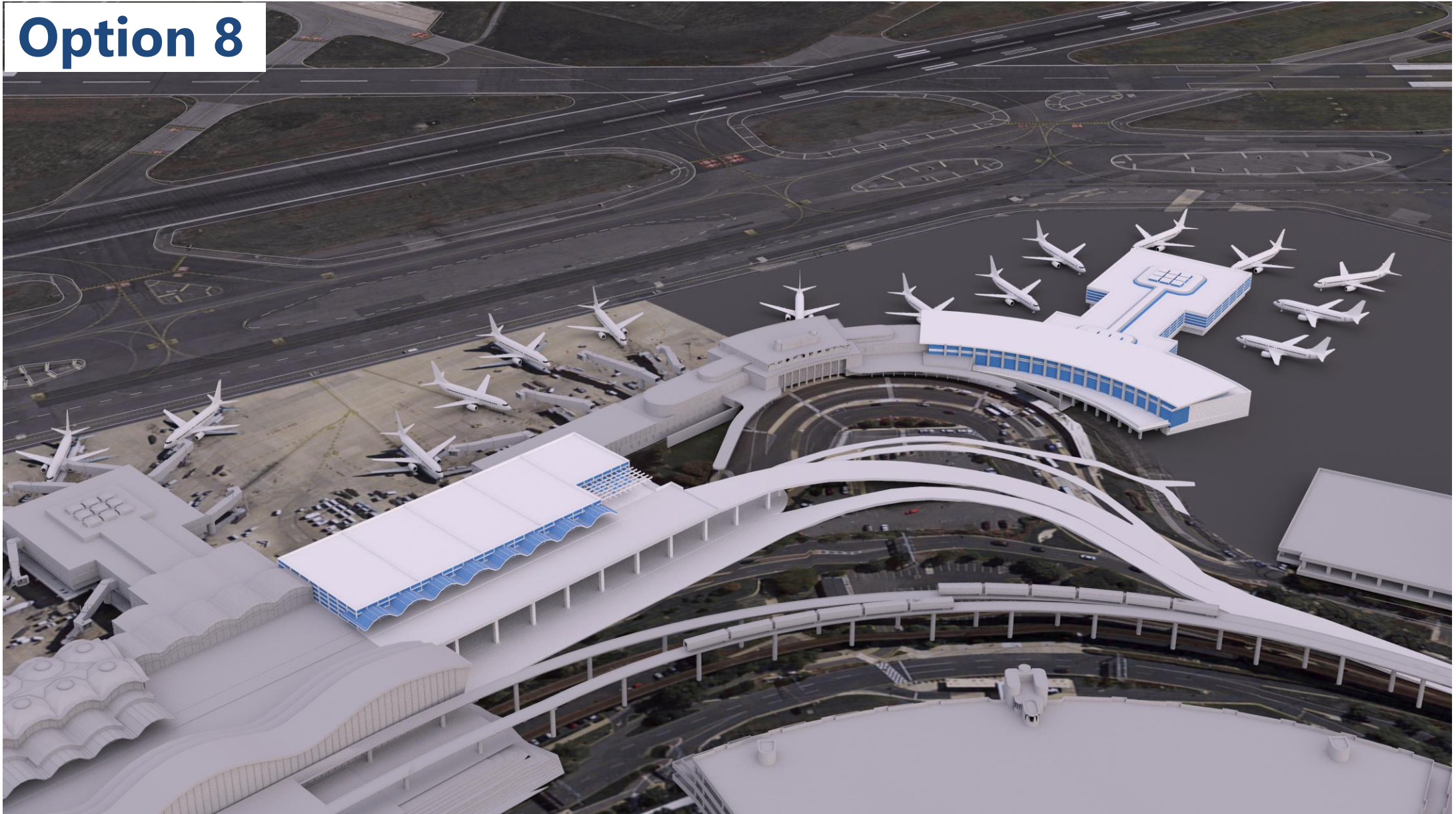


Drawing: P:\project\alexandria\mwa\mwa-01-call (17-08-1045)\task 46 - dca terminal 1 (a) redevelopment\39-terminal\04-Drawings\Concept Refinement\Option8-Site Plan.dwg Layout: 11x17L, Zoomed Plotted: Jun 13, 2022, 04:15PM

Terminal A Redevelopment



# Option 8







# Future DCA Roadway Network Development

RONALD REAGAN WASHINGTON NATIONAL AIRPORT

JANUARY 2023

DRAFT



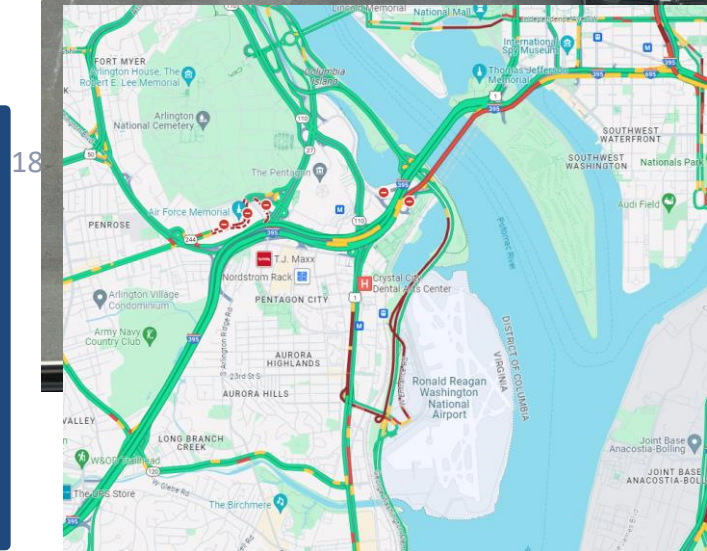
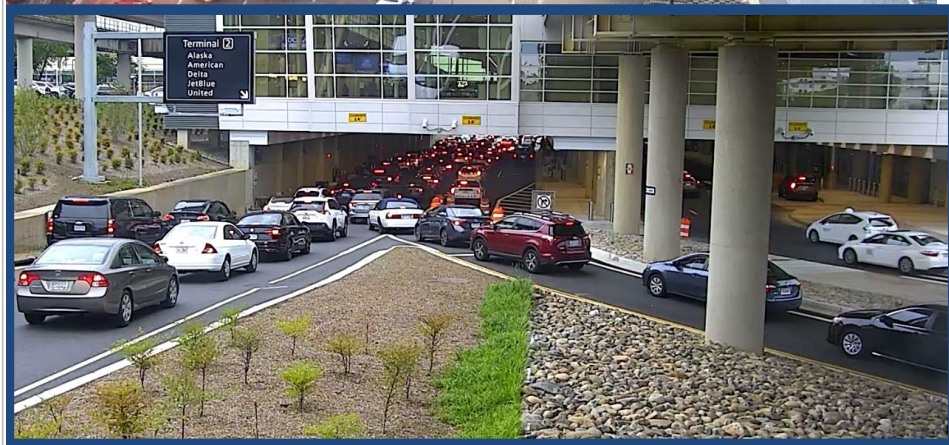
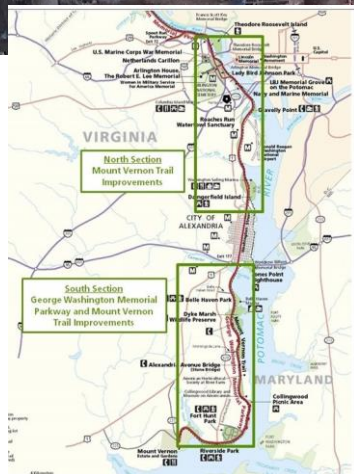
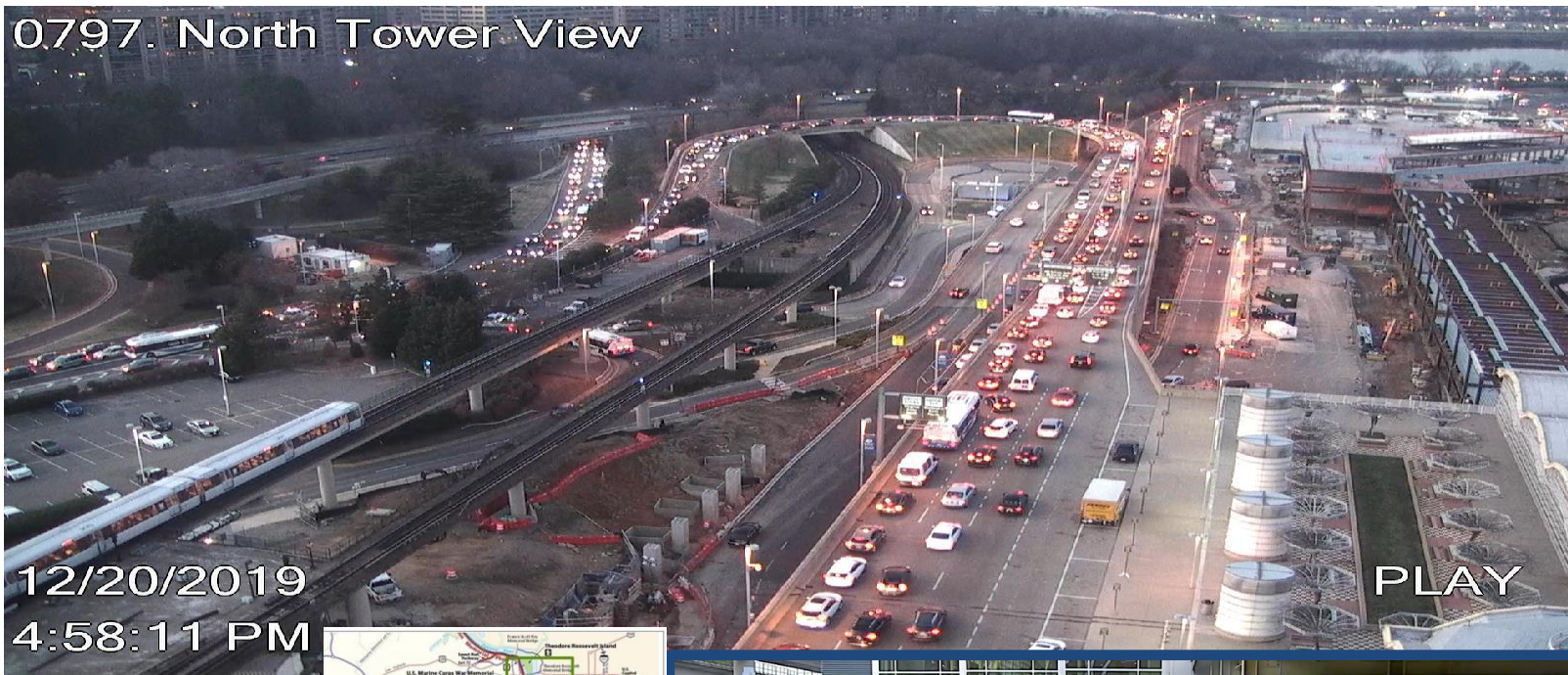
SOURCE: Metropolitan Washington Airports Authority, September 2015, Ricardo & Associates Inc., October 2020.

EXHIBIT A-8



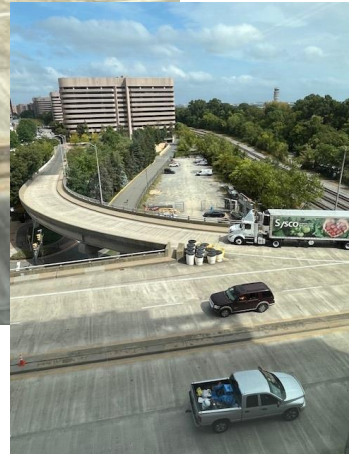
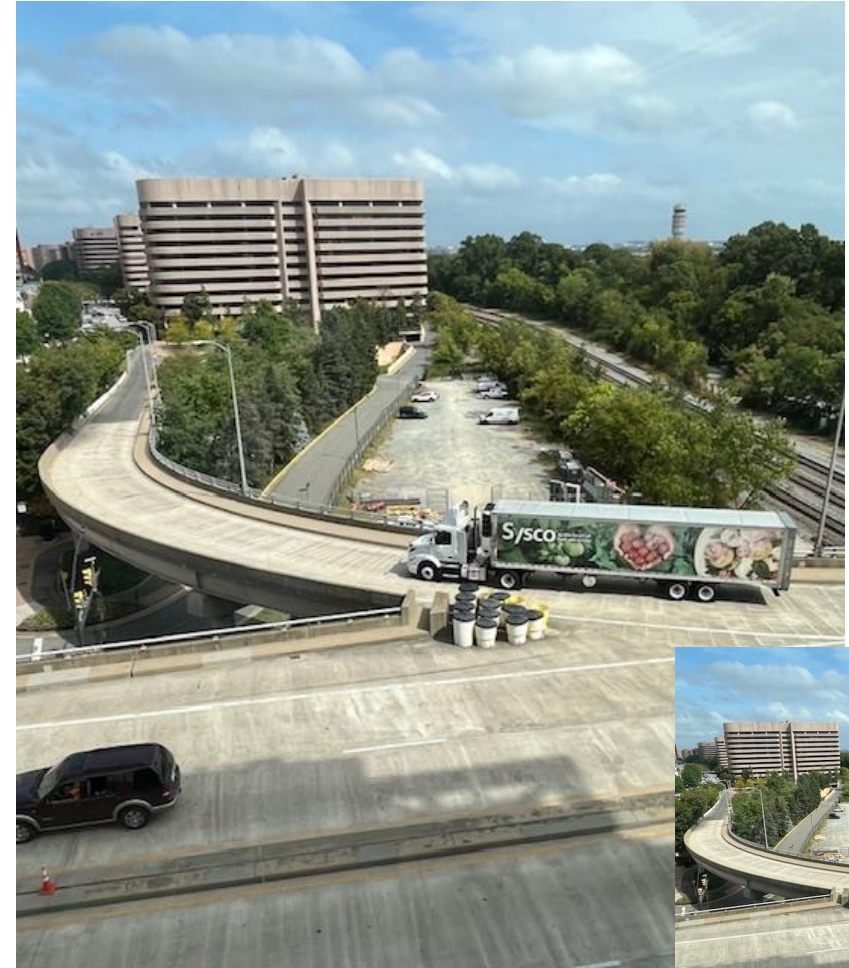
# DCA's Roadways Depend on Regional Connectivity

0797. North Tower View



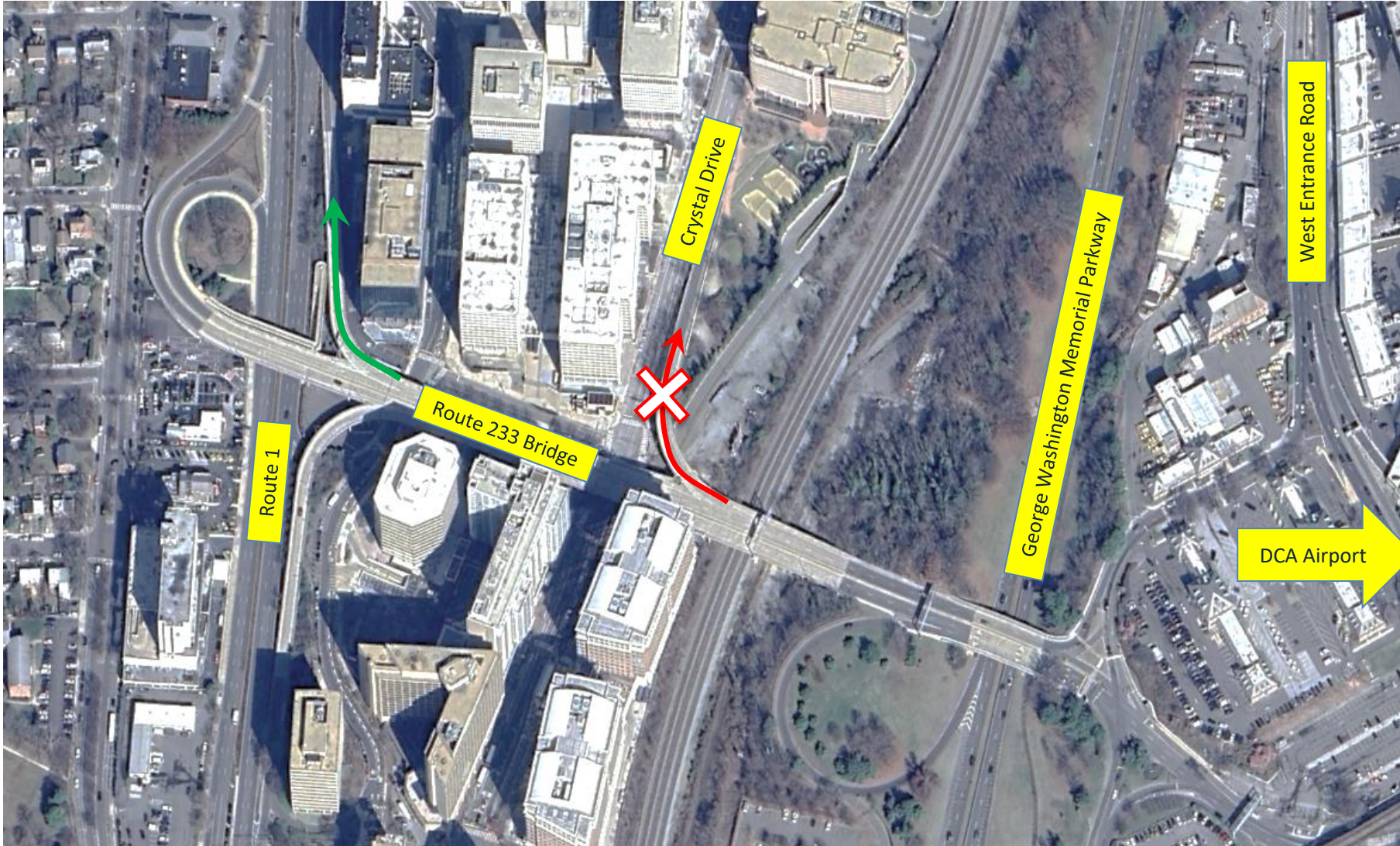


# Crystal Drive – Route 233 Ramp



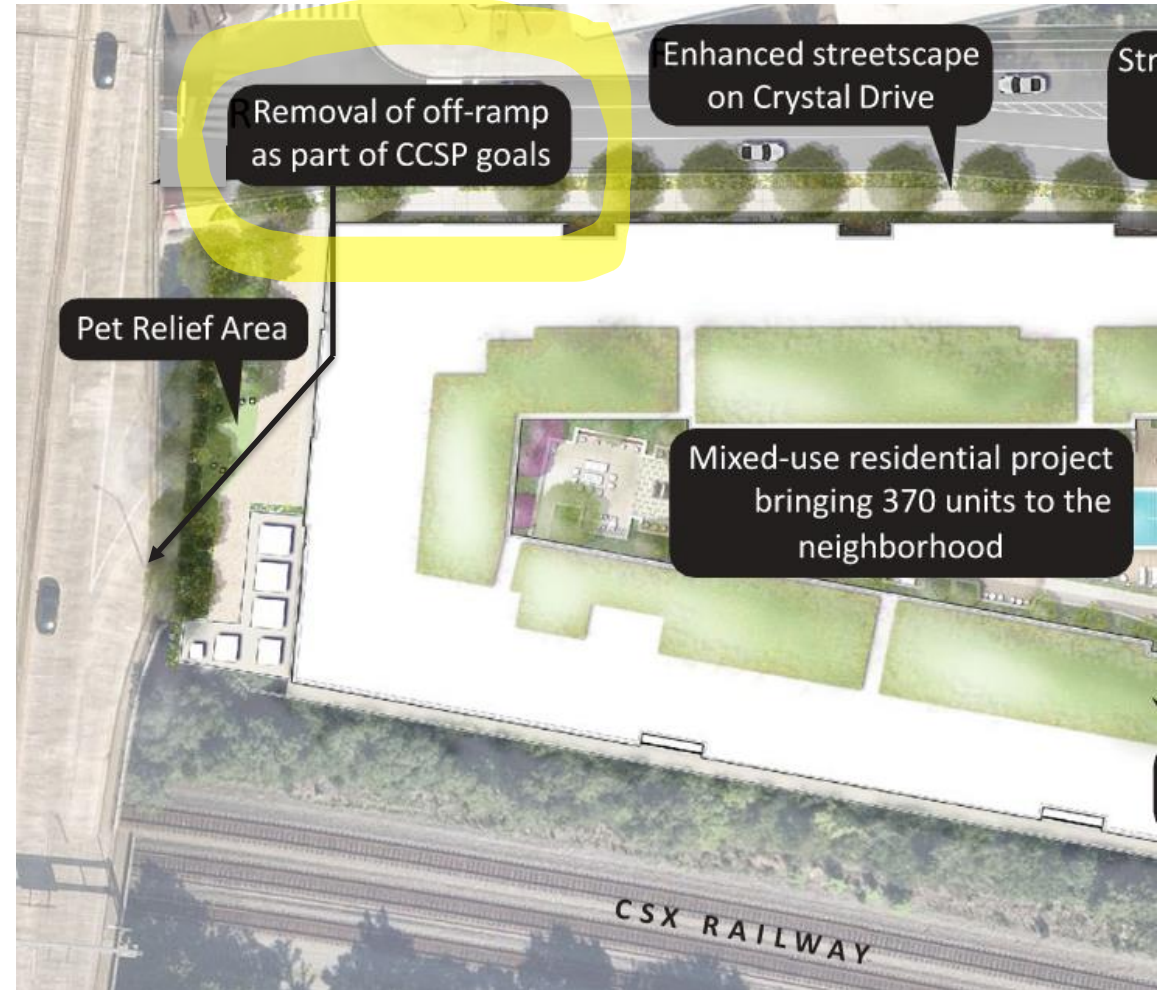
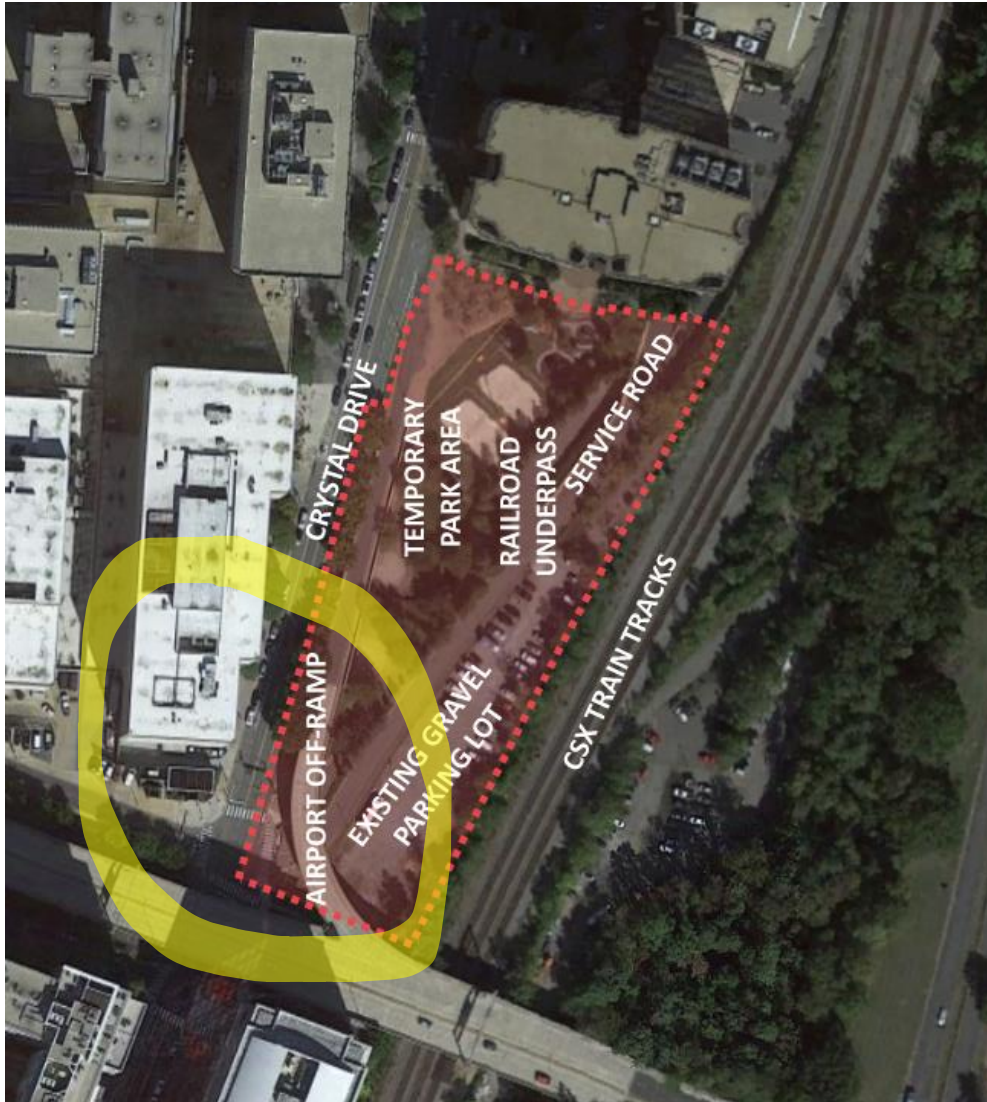


# Rte 233 Bridge & Crystal Drive Ramp Network





# “Block W” Proposal Eliminates Crystal Drive Ramp





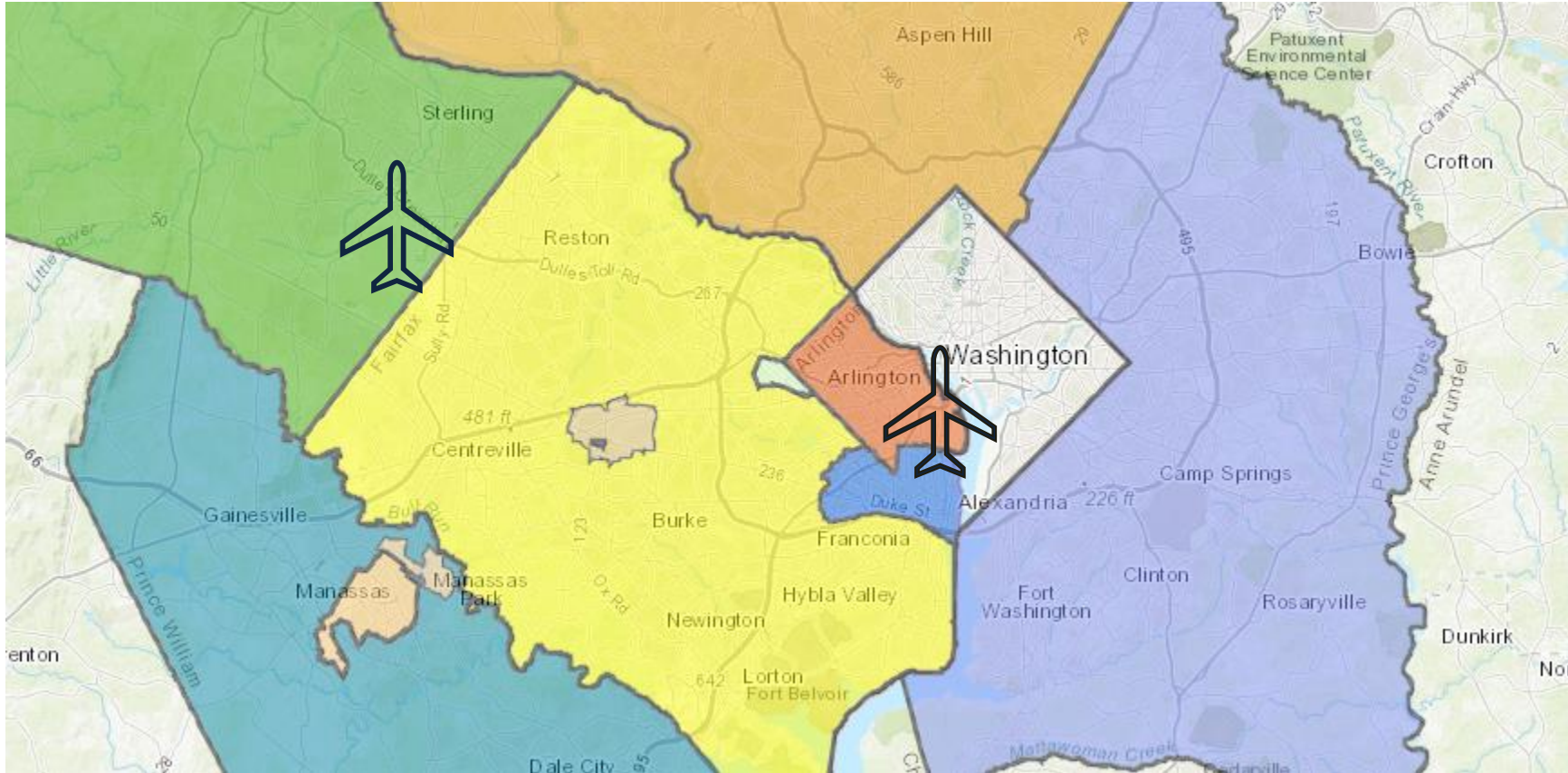
METROPOLITAN WASHINGTON AIRPORTS AUTHORITY

# Crystal Drive Ramp (Removed) if Block W Development Approval Proceeds as Proposed





# MWAA's Continuing Transportation Commitment: Collaboration and Cooperation Benefitting the Region





**METROPOLITAN  
WASHINGTON  
AIRPORTS AUTHORITY**



@Reagan\_Airport

@Dulles\_Airport

@Dulles\_Toll\_Road



reaganairport

FlyDulles

dullestollroad

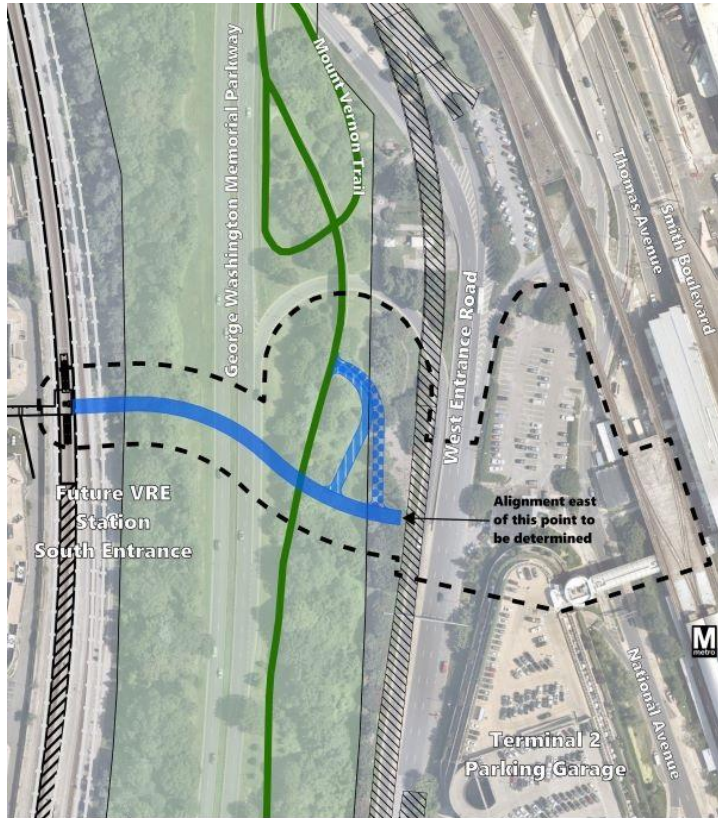






# Arlington County & VDOT's CC2DCA PedEx Bridge Connection - FHWA Findings July 2024

- Status: In Design; National Environmental Policy Act (NEPA) efforts for the CC2DCA connection were finalized on July 24, 2024, when the Federal Highway Administration issued a Finding of No Significant Impact (FONSI) for the project.

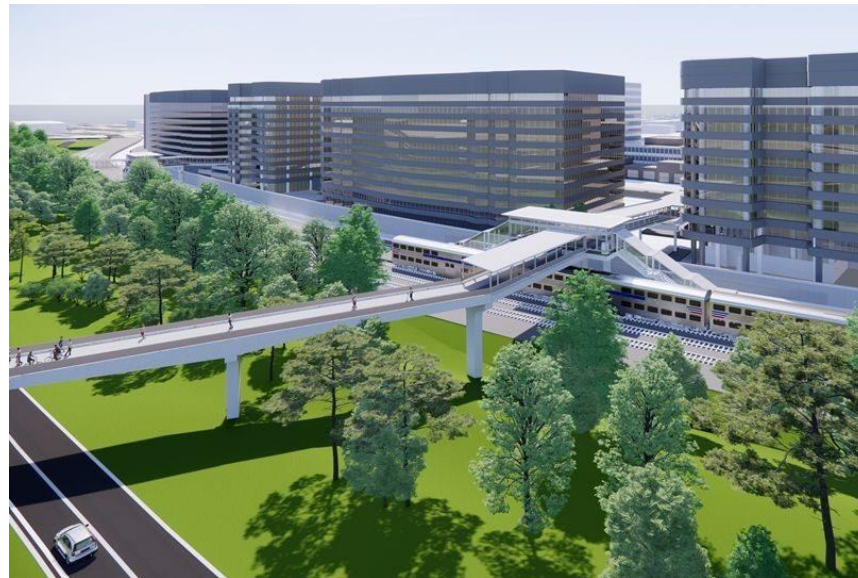


CC2DCA | Crystal City, Arlington, VA

**Recommended Preferred Alternative Alignment and LOD**

Source: NearMap, National Park Service, Arlington County GIS

Recommended Preferred Alternative Alignment	Future Track
Recommended Preferred Alternative LOD	Future DCA Roadways
Mount Vernon Trail Link Option 1	Future Amtrak Platform
Mount Vernon Trail Link Option 2	Future VRE Platform
George Washington Memorial Parkway	Mount Vernon Trail



FHWA 7/24/2024 RE: State Project CCCB-000-896 (UPC 115562):

“...FHWA finds that the project will not have a significant effect on the human environment. Therefore, an Environmental Impact Statement is not warranted, and this Finding of No Significant Impact is being issued accordingly.”